

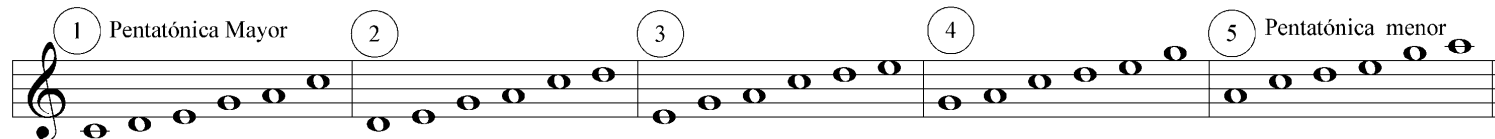
# Escalas hexatónas: (escalas de tonos enteros)

Escala hexatonal 1

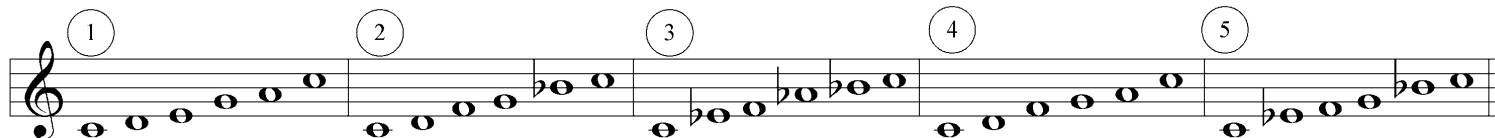
Escala hexatonal 2



## Escalas pentatónicas:



Todas ellas pueden ser transportadas a cualquier otra altura.  
Estas son las cinco escalas pentatónicas a partir de Do:



# Claude Debussy

(1862-1918)



## Preludios Vol. I n° 2

### Voiles (velas)

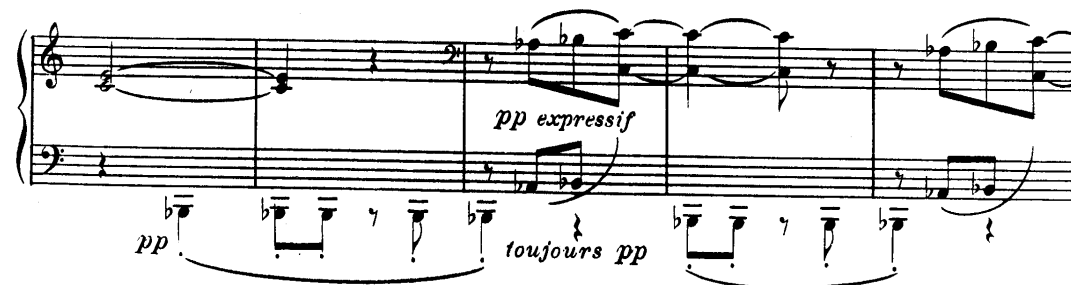
Basado en la escala de tonos enteros y en la escala pentatónica menor de mi bemol (armadura de 5 bemoles, cc. 42-47)

Esquema formal básico: A-B-A'

Modéré (♩ = 88)  
(Dans un rythme sans rigueur et caressant.)

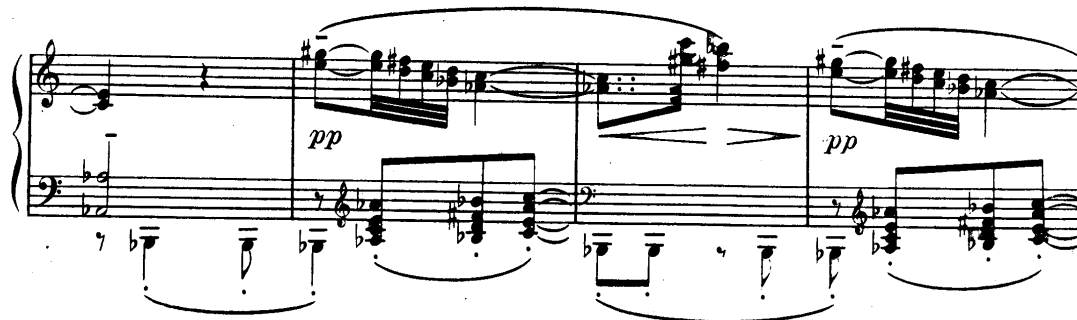
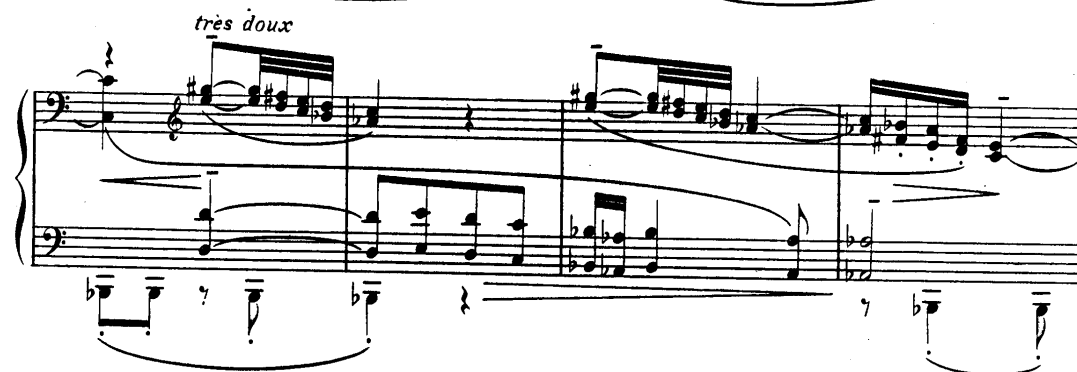


*p très doux* *p* *più p*



*pp* *pp expressif* *toujours pp*

*très doux*



*pp* *pp*

# Escalas Pentatónicas

Modo 1 o pentatónica mayor (2M-2M-3m-2M)

Three staves of musical notation for Mode 1 (Major Pentatonic). The first staff shows the ascending scale: C4, D4, E4, G4, A4. The second staff shows the descending scale: A4, G4, E4, D4, C4. The third staff shows the scale with accidentals: C#4, D#4, E#4, G#4, A#4.

Modo 2 (2M-3m-2M-3m)

Three staves of musical notation for Mode 2 (Minor Pentatonic). The first staff shows the ascending scale: C4, D4, E4, G4, Bb4. The second staff shows the descending scale: Bb4, G4, E4, D4, C4. The third staff shows the scale with accidentals: C#4, D#4, E#4, G#4, Bb4.

Modo 3 (3m-2M-3m-2M)

Three staves of musical notation for Mode 3 (Blues Pentatonic). The first staff shows the ascending scale: C4, Eb4, F4, G4, Ab4. The second staff shows the descending scale: Ab4, G4, F4, Eb4, C4. The third staff shows the scale with accidentals: C#4, Eb4, F#4, G#4, Ab4.

Modo 4 (2M-3m-2M-2M)

Three staves of musical notation for Modo 4 (2M-3m-2M-2M). The first staff shows a sequence of notes: G4, A4, B4, C5, D5, E5, F#5, G5, A5, B5, C6, D6, E6, F#6, G6, A6, B6, C7. The second staff shows: G4, A4, B4, C5, D5, E5, F#5, G5, A5, B5, C6, D6, E6, F#6, G6, A6, B6, C7. The third staff shows: G4, A4, B4, C5, D5, E5, F#5, G5, A5, B5, C6, D6, E6, F#6, G6, A6, B6, C7.

Modo 5 o pentatónica menor (3m-2M-2M-3m)

Three staves of musical notation for Modo 5 o pentatónica menor (3m-2M-2M-3m). The first staff shows: G4, A4, B4, C5, D5, E5, F#5, G5, A5, B5, C6, D6, E6, F#6, G6, A6, B6, C7. The second staff shows: G4, A4, B4, C5, D5, E5, F#5, G5, A5, B5, C6, D6, E6, F#6, G6, A6, B6, C7. The third staff shows: G4, A4, B4, C5, D5, E5, F#5, G5, A5, B5, C6, D6, E6, F#6, G6, A6, B6, C7.

Hexatónica de blues = pentatónica menor con nota de paso cromática (3m-2M-2m-2m-3m)

Four staves of musical notation for Hexatónica de blues = pentatónica menor con nota de paso cromática (3m-2M-2m-2m-3m). The first staff shows: G4, A4, B4, C5, D5, E5, F#5, G5, A5, B5, C6, D6, E6, F#6, G6, A6, B6, C7. The second staff shows: G4, A4, B4, C5, D5, E5, F#5, G5, A5, B5, C6, D6, E6, F#6, G6, A6, B6, C7. The third staff shows: G4, A4, B4, C5, D5, E5, F#5, G5, A5, B5, C6, D6, E6, F#6, G6, A6, B6, C7. The fourth staff shows: G4, A4, B4, C5, D5, E5, F#5, G5, A5, B5, C6, D6, E6, F#6, G6, A6, B6, C7.